

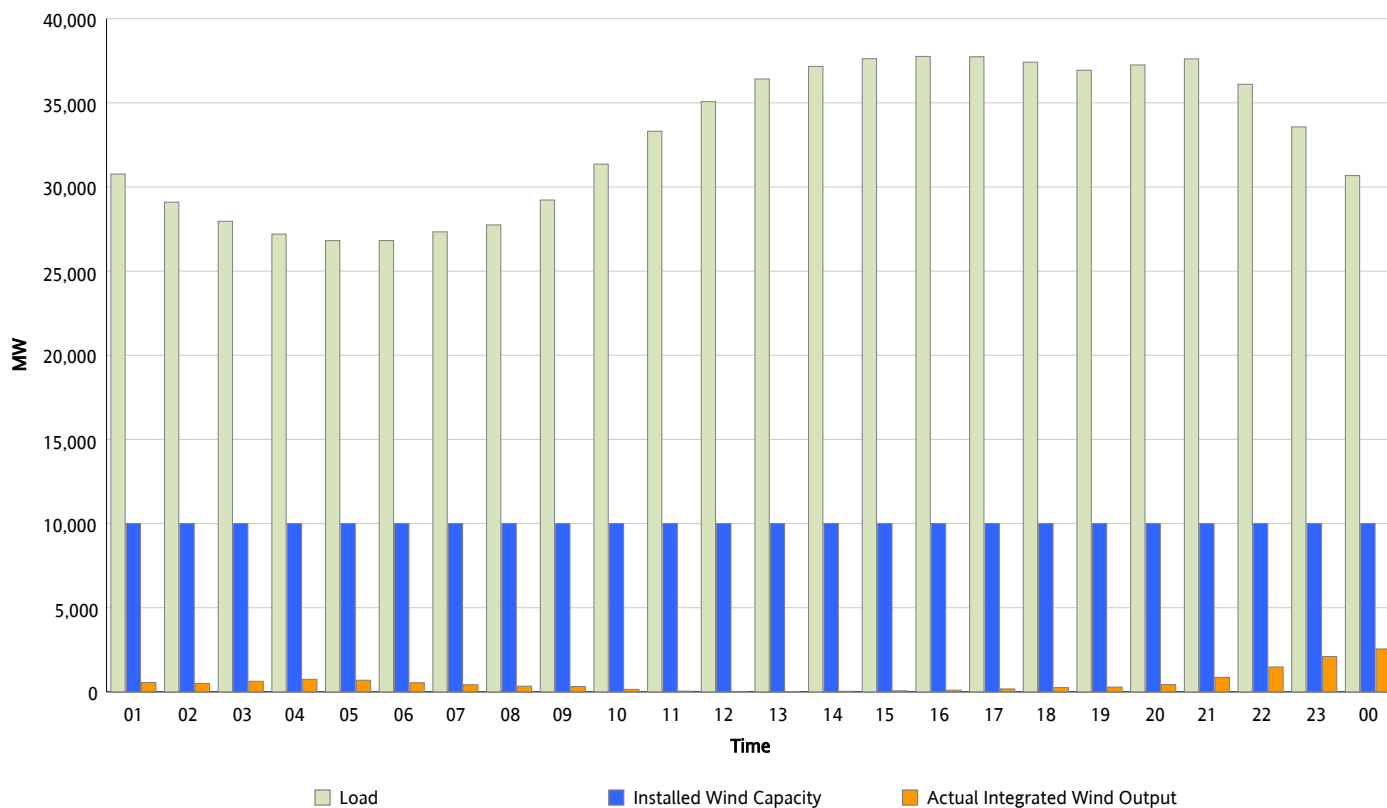


## ERCOT Grid Operations

### Wind Integration Report : 09/16/2012

Peak Load	37,760 MW
Load Peak Hour (HE)	16
Wind Over Peak	100 MW
Wind Record 06/19/12	8,368 MW
Max Wind Value*	2,625 MW
Wind Peak Time	23:47
Wind Integration %	8.78 %

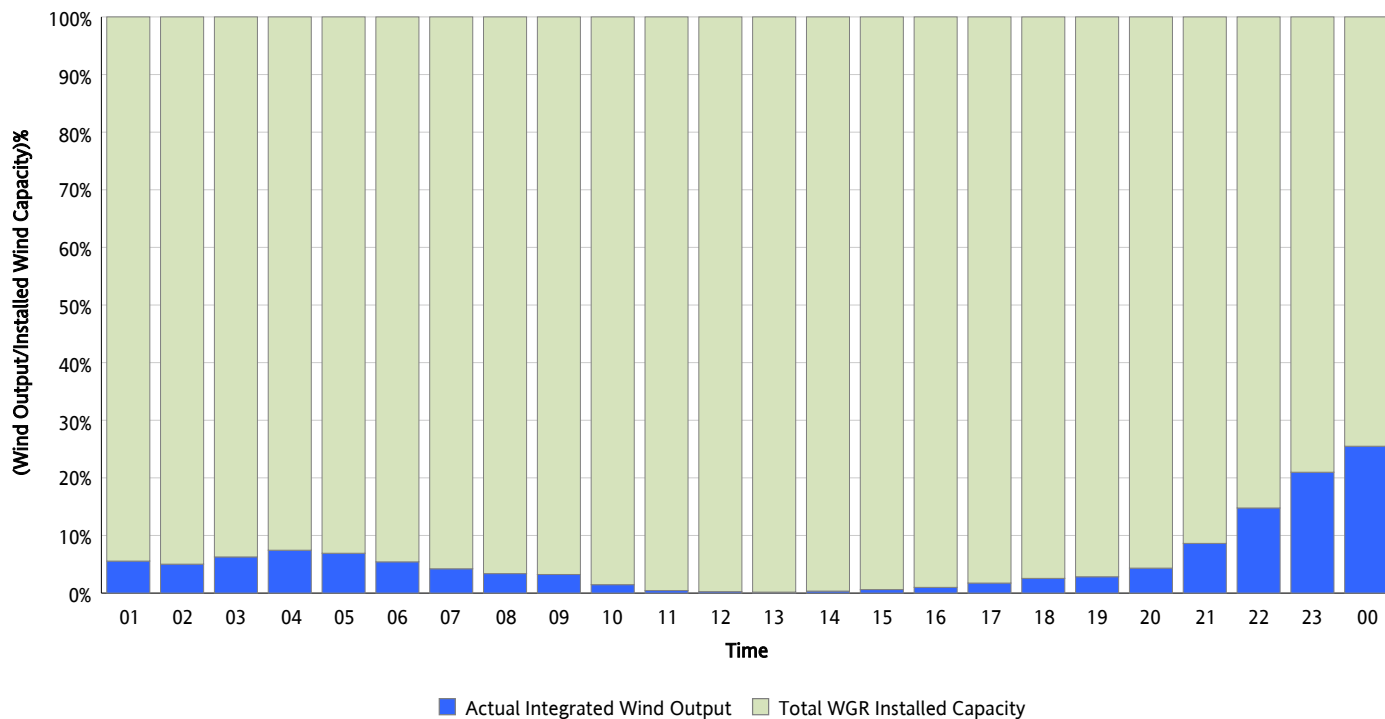
**Hourly Average Actual Load vs. Actual Wind Output**  
09/16/2012



\* Wind Record and Wind Max represent instantaneous values and the rest of the values are integrated over the hour

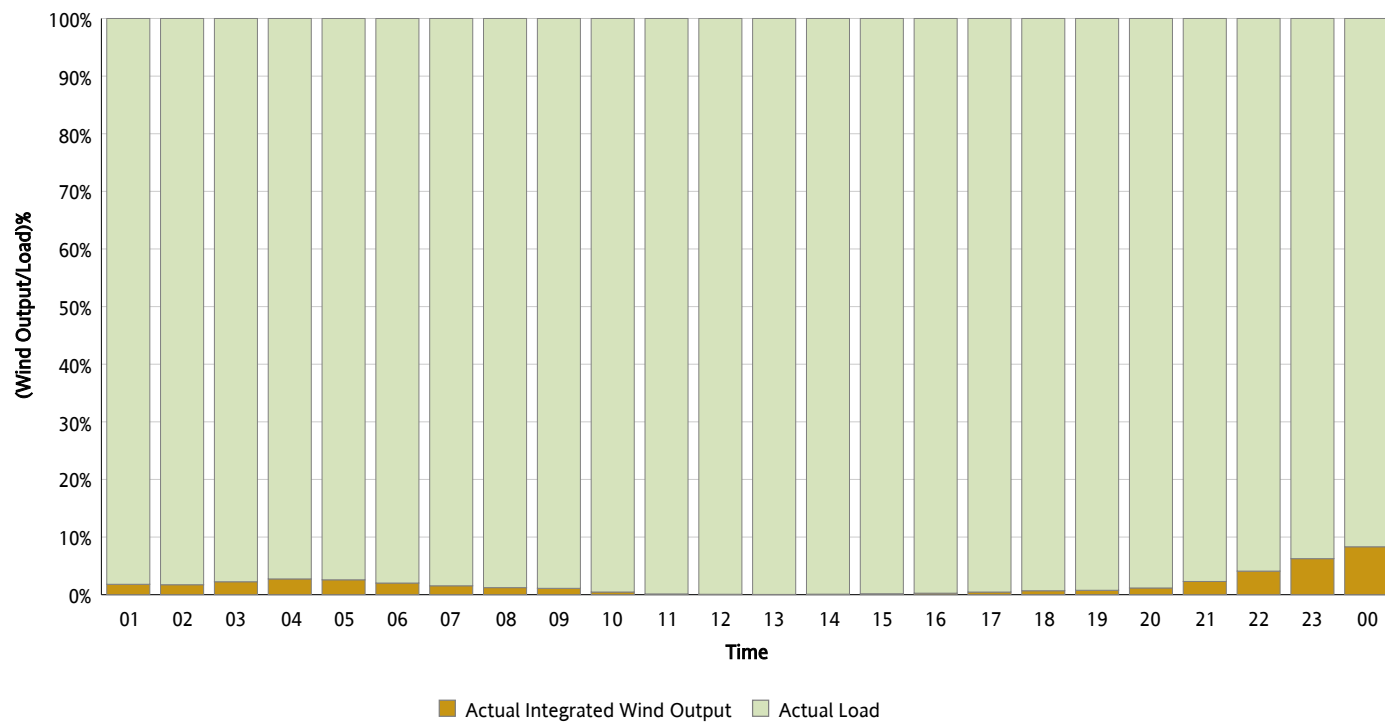
## Actual Wind Output as a Percentage of the Total Installed Wind Capacity

09/16/2012



## Actual Wind Output as a Percentage of the ERCOT Load

09/16/2012



## ERCOT Load vs. Actual Wind Output

09/09/2012 - 09/16/2012

